

## **Annex 5: Sample size, rotation and non-response rate**

### **Table of Contents**

<b>Annex 5: Sample size, rotation and non-response rate.....</b>	<b>1</b>
Figure 1: Different sample size definitions and non-response rate.....	2
Table 1: Actual and achieved sample size, 2022 .....	3
Table 2: Total sample size by countries, 2022.....	4
Table 3: Sample size for the last rotational group, 2022 .....	5
Table 4: Non-response rate by country, 2022 .....	6
Table 6: Rotation 2022.....	8

Figure 1: Different sample size definitions and non-response rate

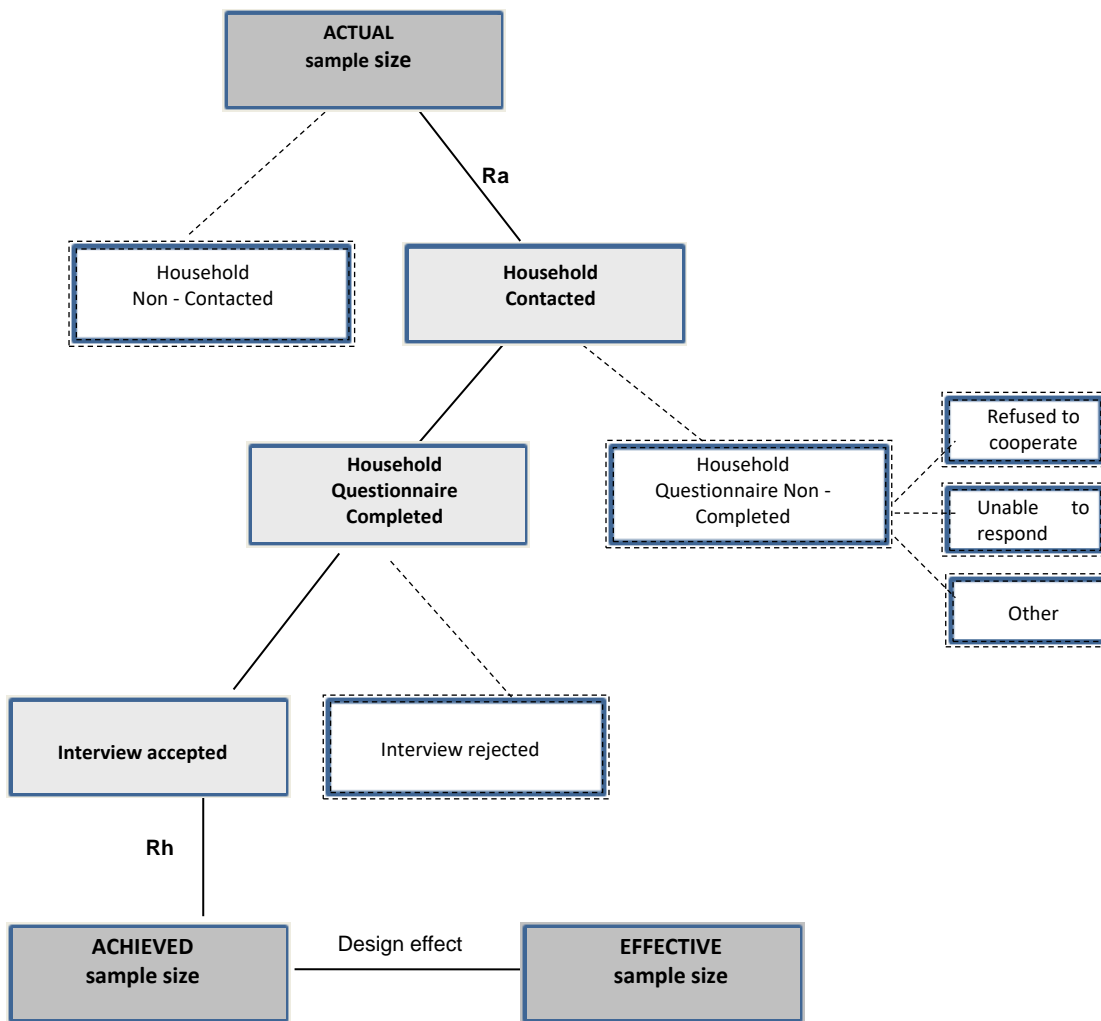


Table 1: Actual and achieved sample size, 2022

<b>Country</b>	<b>Actual sample size</b>	<b>Achieved sample size</b>
<b>BE</b>	11115	6727
<b>BG</b>	9239	7684
<b>CZ</b>	11479	8605
<b>DK</b>	12351	6750
<b>DE</b>	46183	36661
<b>EE</b>	8224	5735
<b>IE</b>	11944	4660
<b>EL</b>	11511	10202
<b>ES</b>	33009	24313
<b>FR</b>	22712	17451
<b>HR</b>	12031	8168
<b>IT</b>	37330	22318
<b>CY</b>	5031	4128
<b>LV</b>	8189	5825
<b>LT</b>	7981	5955
<b>LU</b>	15029	3911
<b>HU</b>	15904	7991
<b>MT</b>	4891	4163
<b>NL</b>	22664	14356
<b>AT</b>	9161	5938
<b>PL</b>	22654	19757
<b>PT</b>	15741	12616
<b>RO</b>	7884	7296
<b>SI</b>	13955	8092
<b>SK</b>	6862	5655
<b>FI</b>	12979	9069
<b>SE</b>	18646	8601
<b>NO</b>	8420	5736
<b>ME</b>	5607	4548

Source: EU-SILC Micro-database 2022 (October 2023)

Table 2: Total sample size by countries, 2022

<b>Country</b>	<b>Achieved Sample Size Households 2022</b>	<b>Achieved Sample Size Households 2021</b>	<b>Ratio 2022/2021</b>	<b>Persons 16 and over 2021</b>
<b>BE</b>	6727	7538	0.89	12297
<b>BG</b>	7684	7551	1.02	15434
<b>CZ</b>	8605	8677	0.99	15440
<b>DK</b>	6750	7836	0.86	11481
<b>DE</b>	36661	34961	1.05	63127
<b>EE</b>	5735	6467	0.89	10707
<b>IE</b>	4660	4846	0.96	9151
<b>EL</b>	10202	12617	0.81	19481
<b>ES</b>	24313	21007	1.16	50147
<b>FR</b>	17451	14015	1.25	31668
<b>HR</b>	8168	8088	1.01	17223
<b>IT</b>	22318	18561	1.20	39814
<b>CY</b>	4128	4113	1.00	8733
<b>LV</b>	5825	6571	0.89	10290
<b>LT</b>	5955	5649	1.05	10487
<b>LU</b>	3911	4080	0.96	7605
<b>HU</b>	7991	7805	1.02	14488
<b>MT</b>	4163	4038	1.03	8921
<b>NL</b>	14356	15242	0.94	26177
<b>AT</b>	5938	6018	0.99	10191
<b>PL</b>	19757	17004	1.16	40556
<b>PT</b>	12616	10973	1.15	26862
<b>RO</b>	7296	7266	1.00	15389
<b>SI</b>	8092	7164	1.13	19018
<b>SK</b>	5655	5612	1.01	11549
<b>FI</b>	9069	9407	0.96	17515
<b>SE</b>	8601	8889	0.97	16435
<b>NO</b>	5736	6031	0.95	11184
<b>ME</b>	4548	4635	0.98	10601

Source: EU-SILC Micro-database 2022 (October 2023)

Table 3: Sample size for the last rotational group, 2022

<b>Country</b>	<b>Last Rotational Group</b>	<b>N of households</b>	<b>% of total sample</b>
<b>BE</b>	8	1046	15.55
<b>BG</b>	6	1718	22.36
<b>CZ</b>	2	2358	27.40
<b>DK</b>	3	2381	35.27
<b>DE</b>	2	9252	25.24
<b>EE</b>	2	1549	27.01
<b>IE</b>	6	1629	34.96
<b>EL</b>	3	2769	27.14
<b>ES</b>	2	7918	32.57
<b>FR</b>	3	5617	32.19
<b>HR</b>	2	2439	29.86
<b>IT</b>	4	10663	47.78
<b>CY</b>	1	1207	29.24
<b>LV</b>	1	1998	34.30
<b>LT</b>	1	1868	31.37
<b>LU</b>	1	2020	51.65
<b>HU</b>	1	2752	34.44
<b>MT</b>	1	1321	31.73
<b>NL</b>	6	2505	17.45
<b>AT</b>	2	1815	30.57
<b>PL</b>	4	6666	33.74
<b>PT</b>	2	4854	38.47
<b>RO</b>	3	1871	25.64
<b>SI</b>	4	3463	42.80
<b>SK</b>	1	1550	27.41
<b>FI</b>	1	2649	29.21
<b>SE</b>	6	1370	15.93
<b>NO</b>	4	1629	28.40
<b>ME</b>	4	949	20.87

Source: EU-SILC Micro-database 2022 (October 2023)

Table 4: Non-response rate by country, 2022

Country	Address contact rate		Household response rate		Individual response rate		Household non-response rate		Overall individual non-response rate		Last Rotational Group
	Total	New entries	Total	New entries	Total	New entries	Total	New entries	Total	New entries	
BE	100.0	100.0	61.1	25.8	99.8	99.4	38.9	74.2	39.0	74.4	8
BG	99.7	98.9	88.3	69.1	99.9	99.9	12.0	31.6	12.2	31.7	6
CZ	96.0	90.4	79.2	54.9	100.0	100.0	24.0	50.4	24.0	50.4	2
DK	100.0	100.0	55.0	41.9	100.0	100.0	45.1	58.1	45.1	58.1	3
DE	98.5	98.0	87.0	86.5	99.6	99.5	14.3	15.2	14.6	15.6	2
EE	94.4	86.0	78.0	62.2	91.3	87.1	26.4	46.5	32.8	53.4	2
IE	99.4	99.1	47.7	28.2	100.0	100.0	52.6	72.0	52.6	72.0	6
EL	98.0	94.3	91.7	75.2	99.4	99.5	10.1	29.0	10.6	29.4	3
ES	99.6	99.1	75.7	62.3	98.5	97.8	24.6	38.3	25.7	39.7	2
FR	97.5	93.9	84.6	73.5	98.1	98.1	17.6	31.0	19.1	32.4	3
HR	89.0	76.0	81.1	62.6	98.9	98.9	27.8	52.5	28.6	53.0	2
IT	97.5	95.5	62.4	54.5	100.0	100.0	39.2	48.0	39.2	48.0	4
CY	99.7	99.1	89.4	80.8	100.0	100.0	10.8	19.9	10.8	19.9	1
LV	98.4	96.4	74.6	58.0	92.9	91.9	26.6	44.1	31.8	48.7	1
LT	99.0	97.5	84.0	66.8	100.0	100.0	16.8	34.9	16.8	34.9	1
LU	40.6	29.0	72.7	62.9	100.0	100.0	70.5	81.8	70.5	81.8	1
HU	82.7	69.2	69.2	50.7	98.5	97.7	42.8	65.0	43.7	65.7	1
MT	99.8	99.6	87.9	84.3	100.0	100.0	12.3	16.0	12.3	16.0	1
NL	96.5	88.6	67.5	41.9	100.0	100.0	34.8	62.9	34.8	62.9	6
AT	99.5	99.9	67.6	44.2	99.5	100.0	32.8	55.9	33.1	55.9	2
PL	98.8	96.6	89.3	89.2	86.9	83.8	11.8	13.8	23.4	27.8	4
PT	100.0	100.0	82.8	84.6	99.2	99.8	17.2	15.4	17.8	15.5	2
RO	99.4	97.8	94.7	83.9	99.8	99.8	5.9	17.9	6.1	18.1	3
SI	89.4	81.1	68.4	57.3	100.0	100.0	38.9	53.5	38.9	53.5	4
SK	100.0	100.0	82.8	62.1	100.0	100.0	17.2	37.9	17.2	37.9	1
FI	100.0	100.0	70.6	48.9	100.0	100.0	29.4	51.1	29.4	51.1	1
SE	90.8	77.0	54.9	69.3	100.0	100.0	50.1	46.6	50.1	46.6	6
NO	100.0	100.0	69.7	100.0	100.0	100.0	30.3	-	30.3	-	4
ME	99.1	97.2	84.8	62.0	99.9	99.7	16.0	39.8	16.0	40.0	4

Source: EU-SILC Micro-database 2022 (October 2023)

Table 5: Proxy interviews 2021-2022, cross sectional data

<b>Country</b>	<b>2022: Number of proxy interviews</b>	<b>2022: % of proxy interviews on total sample</b>	<b>2021: Number of proxy interviews</b>	<b>2021: % of proxy interviews on total sample</b>
<b>BE</b>	1224	10.1	1103	8.0
<b>BG</b>	3288	21.3	3140	20.6
<b>CZ</b>	4141	26.8	4660	29.6
<b>DK</b>	114	1.7	129	1.6
<b>DE</b>	8493	20.9	8317	13.7
<b>EE</b>	987	10.1	2034	17.2
<b>IE</b>	3800	41.5	3985	40.4
<b>EL</b>	1319	6.8	1539	6.3
<b>ES</b>	16991	34.4	16039	36.9
<b>FR</b>	7790	25.1	7562	29.6
<b>HR</b>	7112	41.3	7501	43.5
<b>IT</b>	9320	23.4	7447	21.8
<b>CY</b>	977	11.2	2375	26.6
<b>LV</b>	2739	28.6	3623	32.3
<b>LT</b>	2843	28.1	2968	28.9
<b>LU</b>	1733	22.8	2783	30.9
<b>HU</b>	4365	30.1	3985	27.6
<b>MT</b>	2533	28.4	2950	33.6
<b>NL</b>	0	-	0	-
<b>AT</b>	927	9.1	852	8.2
<b>PL</b>	11678	33.1	14687	46.8
<b>PT</b>	11396	42.5	11357	48.4
<b>RO</b>	3076	20.0	1454	9.5
<b>SI</b>	1430	17.7	1292	18.0
<b>SK</b>	2846	24.6	2734	23.3
<b>FI</b>	929	10.2	1110	11.8
<b>SE</b>	139	1.6	132	1.5
<b>NO</b>	4806	43.4	4767	41.5
<b>ME</b>	4452	42.0	4526	40.8

Source: EU SILC Micro-database 2022 (October 2023)

Table 6: Rotation 2022

Countries	Country code	Rotation 2022
Belgium	BE	6
Bulgaria	BG	6
Czechia	CZ	4
Denmark	DK	4
Germany	DE	4
Estonia	EE	4
Ireland	IE	6
Greece	EL	4
Spain	ES	4
France	FR	4
Croatia	HR	4
Italy	IT	6
Cyprus	CY	4
Latvia	LV	4
Lithuania	LT	4
Luxembourg	LU	4
Hungary	HU	4
Malta	MT	4
Netherlands	NL	6
Austria	AT	4
Poland	PL	4
Portugal	PT	4
Romania	RO	4
Slovenia	SI	4
Slovakia	SK	4
Finland	FI	4
Sweden	SE	5
Norway	NO	4
Switzerland	CH	4
Montenegro	ME	4

Source: National quality reports 2022 and EU-SILC data 2022 (extraction October 2023)

*Note: Countries not listed: no QR 2022, or data transmitted until 30 October 2023. These countries will be included in an updated version of comparative SIMS 2022*